



Company Profile

NAM DINH FOREST PRODUCTS JOINT STOCK COMPANY

Crafting Sustainable Wood Solutions for Global Homes Since 1991

Table of Contents

Discover the stories behind our factories, where every home furnishing is crafted thoughtfully to make better and more comfortable lives for families worldwide.

01/ About us

Our journey	03
Our core Values	04
Our Strengths	05
Our Achievements	06

02/ Manufacturing Capabilities

Strategic Logistics Advantage	07
Manufacturing Overview	08

03/ Our Products

Product Portfolio	12
-------------------	----

04/ Certifications Achieved

15

Our Journey

Established in 1991, Nafoco is a trusted wood manufacturer with more than three decades of industry expertise. We have devoted our knowledge, craftsmanship, and passion to transforming acacia wood – a robust and sustainable material – into refined, durable products designed for modern living.

From outdoor furniture to indoor home ranges, every item we create carries our promise: **To deliver quality products that make everyday life more comfortable for families.**

2025

- ☑ Achieved our goal of bringing our wood furniture to key international markets worldwide by 2025

Target revenue: **USD 50 million**

2021

- ☑ Built Factory No. 3 in Tân Thành;
- ☑ Installed 4MW solar power system;

Annual revenue reached **USD 30 million**

2016

- ☑ Obtained FSC® certification;
- ☑ Built a new finished-goods warehouse;

Annual revenue reached **USD 38 million**

2011

- ☑ Constructed Factory No. 2 in Bảo Minh;

Annual revenue reached **USD 20 million**

2007

- ☑ Became an official IKEA supplier;
- ☑ Developed Outdoor range;

Achieved annual revenue of **USD 3 million**

Company established

1991

Our core Values

Throughout over Nafoco's 35-year journey, our founder has remained steadfast in a people-centered management philosophy built on empathy and understanding. This philosophy has shaped Nafoco's three core values.



Innovation Driven by Internal Talent

We believe true strength comes from unlocking the full potential of our people and the resources we already have. That is why we continuously nurture creativity from within, empowering our teams to innovate, grow, and create greater value every day.



Empathy-driven leadership. Process-driven execution

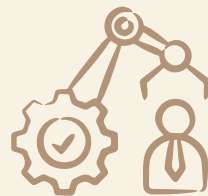
By managing with understanding, we foster a positive workplace culture that enhances autonomy and creativity. By working according to standards, our people gain clarity and direction, enabling them to act proactively—with greater speed, precision, and confidence.



ESG inspires us forward

At Nafoco, ESG Environmental – Social – Governance is not merely a standard—it is a guiding principle that shapes every action we take. To us, ESG is a powerful driving force behind sustainable growth, long-term value, and meaningful impact.

01



A dedicated team of over 30 highly skilled specialists, capable of developing and manufacturing in-house automation robots.



Deep understanding of the European and North American markets, backed by 20 years of experience as an IKEA supplier.

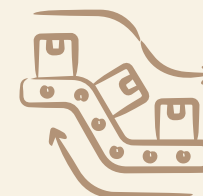


Development of FSC-certified plantation forests and sawmill operations compliant with CoC standards.

Our Strengths



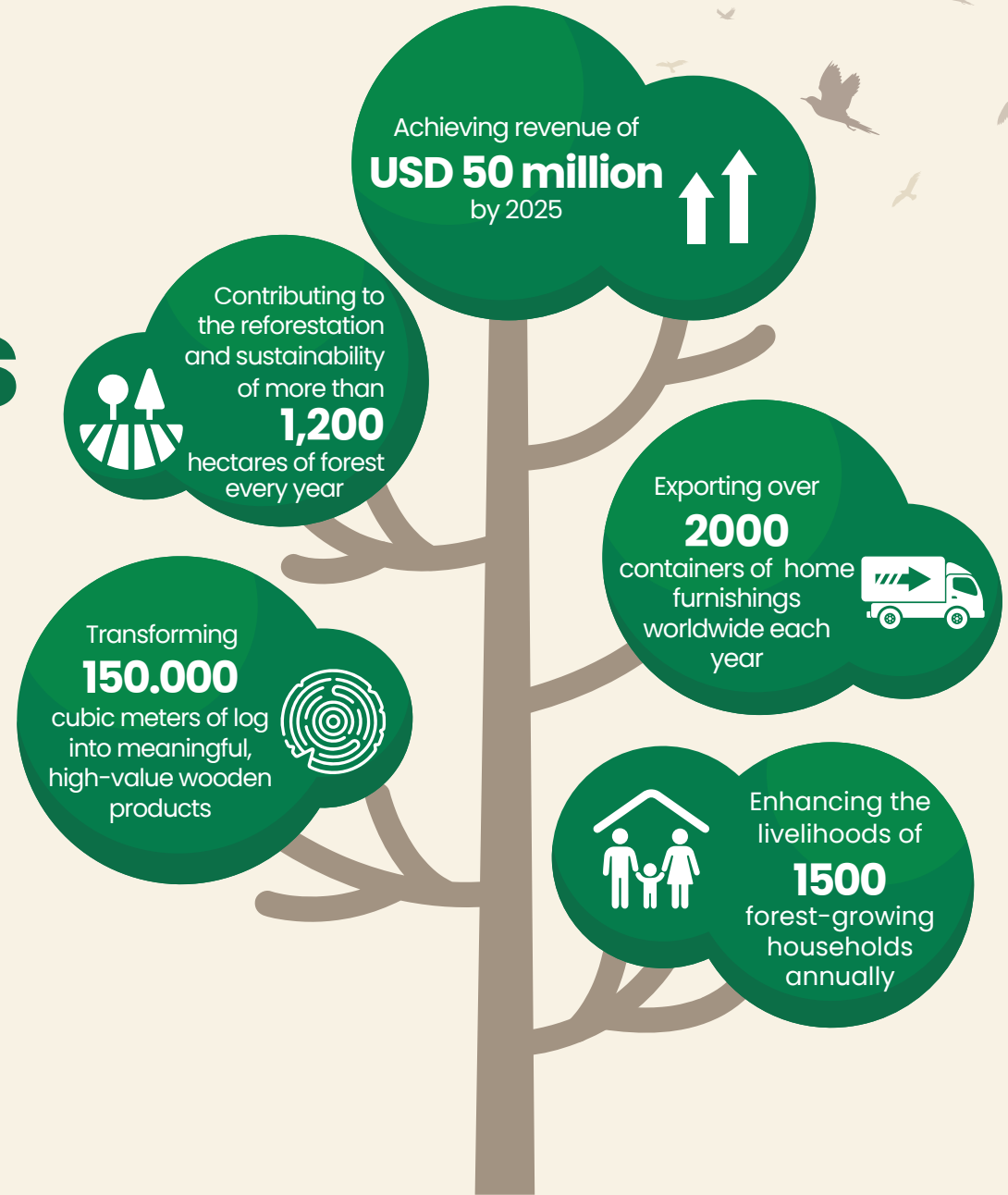
Over 35 years of experience in sustainable wood manufacturing and global partnerships.



A highly advanced production system with an automation rate that significantly surpasses most manufacturers in the industry.

Our Achievements

For us, success is not only about creating exceptional wooden furniture – it is about delivering lasting value to communities and the world around us.



Strategic Logistics Advantage

- 📍 Hoa Xa Manufacturing Factory
- 📍 Bao Minh Manufacturing Factory
- 📍 Tan Thanh Manufacturing Factory

Hai Phong Port
Customs clearance in 30 minutes,
ensuring fast and reliable export handling

Efficient customs
clearance procedures

2 hours
of inland transportation from
the factory to Hai Phong Port

🏠 Integrated production base with a finished-goods warehouse capacity of 30,000 m²

Pacific Ocean

30-38 days

24-26 days

U.S. East Coast



U.S. West Coast



Ninh Binh province



Total factory area (3 factories)

270.000 m²



Total workforce (3 factories)

1.800 employees



Total production capacity (3 factories)

2.000 containers per year

Manufacturing Overview



In-house Automation Development

Thanks to our people-driven innovation strategy, Nafoco independently develops and integrates 3-axis robots and specialized processing machines directly into our production lines. With advanced CNC systems and state-of-the-art 3D copying technology, we ensure outstanding machining precision, significantly reduce manual labor requirements, and maintain consistent quality across large-scale production volumes.

Meticulous Craftsmanship, Scalable Excellence

We take pride in our ability to deliver large-scale production while ensuring every single product meets the highest standards of quality and aesthetics. This is made possible by our stable, high-performing production systems and the unwavering dedication of our skilled team—who treat each product with care, precision, and responsibility.



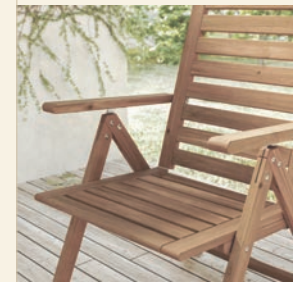
ESG is not only our direction **ESG is our action**

The air inside Nafoco factories is astonishingly clean — the result of thousands of engineering hours spent designing, developing energy-efficient dust extraction systems created entirely by Nafoco engineers.

We also upgraded our 11,000 m³ kiln-drying system, reducing electricity consumption by 37% — a powerful demonstration of how innovation drives both sustainability and efficiency at Nafoco.

Product Portfolio

Nafoco products stand out with their diverse designs, robust structural integrity, and exquisitely refined surface finishing, delivering superior quality that meets the expectations of leading global partners.



Product Portfolio



Product Portfolio



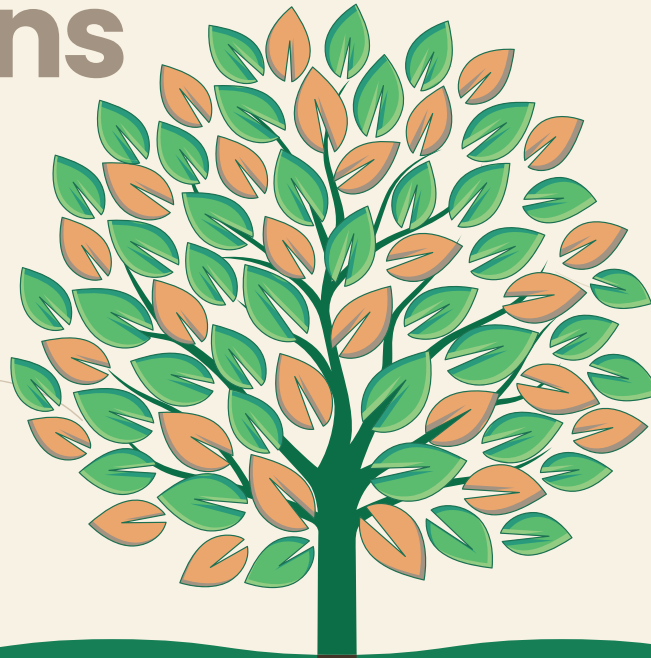
Product Portfolio



Product Portfolio



Certifications achieved



4.12.2025

We are fully certified to FSC standards, ensuring that our wood materials come from responsibly managed and legally sourced forests. With FSC CoC certification, we also provide full traceability from forest to finished product, giving our partners confidence and transparency.



27.3.2025

We are fully certified with the necessary ISO standards required for wood manufacturing and production management, ensuring a robust Quality Management System focused on consistency, continual improvement, and customer satisfaction.



22.4.2025

We participate in BSCI to ensure ethical, socially responsible, and legally compliant working conditions across our production operations.



26.1.2023

We comply with C-TPAT requirements, strengthening supply chain security and ensuring safe, reliable, and compliant international trade operations.

NAM DINH FOREST PRODUCTS JOINT STOCK COMPANY

Crafting Sustainable Wood Solutions for Global Homes Since 1991

Email: cuong@nafoco.com.vn

Website: nafoco.com.vn

Hotline/Whatsapp: **+84.964916666**

HEAD OFFICE & FACTORY 1

HOA XA WOODEN FURNITURE EXPORT FACTORY

Block C1, D2 Street, Hoa Xa Industrial Zone, Dong A ward,
Ninh Binh province, Vietnam

FACTORY 2

BAO MINH WOODEN FURNITURE EXPORT FACTORY

Block C10-1, G10-2 Bao Minh Industrial Zone, Truong Thi
ward, Ninh Binh province, Vietnam

FACTORY 3

TAN THANH INDOOR FURNITURE FOR EXPORT FACTORY

Truong Thi ward, Ninh Binh Province, Vietnam